

Welcome

The entire staff at Hancock County Memorial Hospital unites in welcoming you to our hospital. Your satisfaction with our personalized, professional care is important to us.

We know you have many choices when it comes to your healthcare...thank you for trusting us.

★ **Emergencies**

For emergency medical care, available 24 hours a day, seven days a week, use the entrance located at the southwest corner of the Britt Medical Clinic parking lot, indicated below with a red star.

★ **Patient Rooms**

All patient rooms and the Nurse's Station are located on the second floor. Elevators and stairways to the second floor are indicated below with a gold star.

Directory

★ **Hospital Main Entrance (Atrium Southwest)**

Registration/Admitting
Patient Financial Services
Physical Therapy
 Cardiac Rehabilitation
Specialty Clinics
 Cardiology
 Ear, Nose and Throat
 Orthopedics
 Podiatry
 Surgery
 Urology

★ **Britt Medical Clinic (Southeast Entrance)**

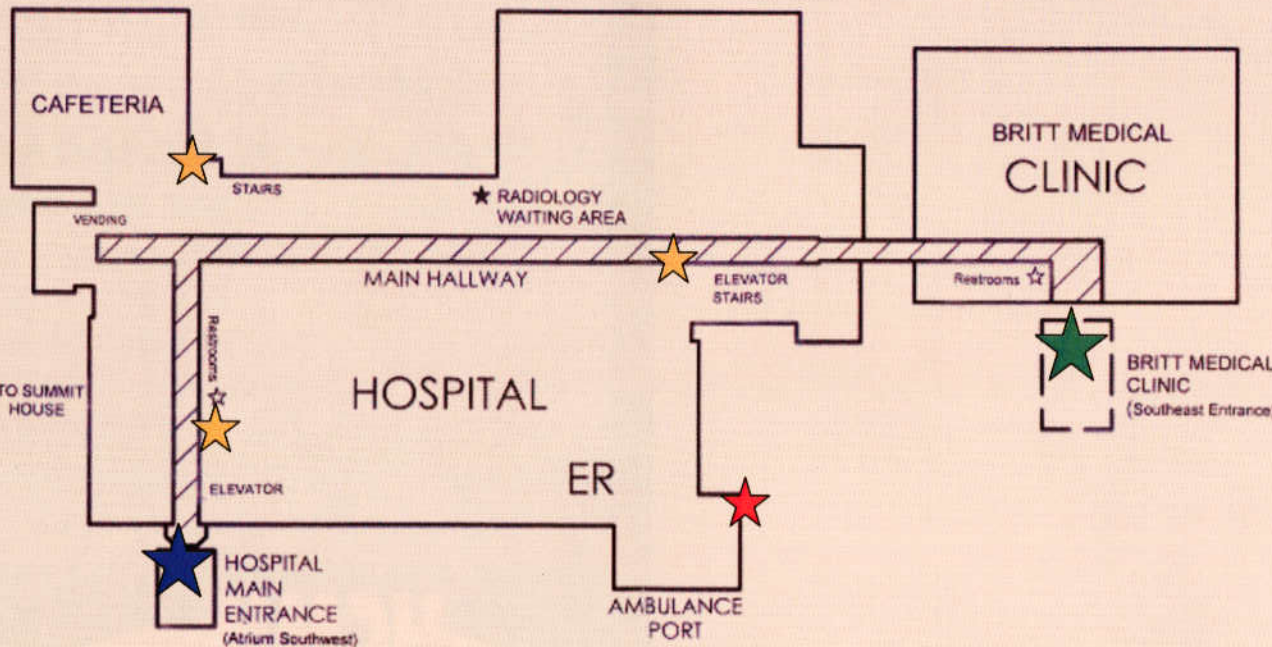
Clinic Patient Registration
East Conference Room
Laboratory Registration
Radiology/X-Ray Registration

First Floor

Administration
Cafeteria/Nutrition Services
Environmental Services
Finance
Human Resources
Materials Management
Marketing
Project Consultant

Second Floor

Business Health/Education
Medical Records
Nurses Station
Patient Rooms



HANCOCK COUNTY MEMORIAL HOSPITAL
532 1st Street NW, Britt, Iowa 50423

